

Investing in the health of our
community, *today and tomorrow.*



For You.
With You.

A Mile Bluff Medical Center Capital Campaign

Artistic renderings by HSR Associates.

A community-first approach to healthcare

When it comes to the long-term well-being of a community, one thing makes a critical difference: Having access to local, independent healthcare.

Local healthcare means that a mom in labor is just minutes away from the help she needs for a successful delivery. That a patient on dialysis doesn't need to travel long distances, multiple times a week, for treatment. That support for anything from a cold to a medical emergency is available just down the street.

Just as important, local healthcare supports residents and businesses as they look to put down roots in a healthy, thriving community.

When that local care is delivered by an independent organization, what was already exceptional, becomes even better. Decisions regarding local healthcare services are made at the local level and are guided by the needs of the community.

For more than a century, Mile Bluff Medical Center has been the local, independent healthcare partner people throughout Juneau County and the surrounding area have counted on. We embrace

that role and work hard to deliver the very best in healthcare services, skills, and technology for you, our patients.

But today, as healthcare needs grow and become more complex, the challenge of delivering excellent healthcare constantly evolves. Many departments at Mile Bluff are poised for growth, but are limited by outdated, inefficient, and crowded spaces that challenge patients and staff alike. Although we continue to offer the best in compassionate, patient-first care, facility-related obstacles make it difficult for us to expand and could impact patient confidence in the quality of our services.

To better meet our community's current and future needs, we are ready to take the next step in making overdue changes within our facilities. With organizational growth in mind, we've put together a comprehensive plan that better serves the patients of today and plans for the patients of the future. At Mile Bluff, we see our community and our patients as partners in the healthcare team. As we prepare for growth, we are eager to collaborate, knowing that together we will take Mile Bluff Medical Center to a new level of exceptional care.



More than a century of compassionate, community-focused care

In 1893, just six years after the town of Mauston was incorporated, Dr. J.S. Hess, Sr. opened a simple storefront where he began to offer a range of medical services to the people of our growing town. In addition to being an excellent physician, Dr. Hess was also a committed neighbor and civic leader. He understood the impact local, independent healthcare has on the well-being of a community and started a tradition Mile Bluff Medical Center continues to deliver to this day: To provide exceptional healthcare for our community, in our community.

In the 130 years since Dr. Hess first opened his clinic, Mile Bluff has been a force for healthcare excellence and is the only hospital system in Juneau County. At a time when too many small communities have lost their local hospitals and clinics, or had their community hospital purchased by a larger healthcare system, Mile Bluff has remained a steadfast, independent presence.

Generations of local families have relied on us to meet their medical needs from birth through the final stages of life. To earn the privilege of serving them, we've evolved over time, adding facility space, locations, and investing in medical technology. Most importantly, we've made it a priority to hire a compassionate, world-class healthcare team. All of this is for our patients.



In 2022, our team...

- + Cared for 25,000 patients during more than 70,000 visits at our five primary care clinics**
- + Treated an average of 285 clinic patients per day**
- + Served 12,000 patients in the emergency room and urgent care**
- + Provided 3,072 dialysis treatments, which equals 12,288 hours of care**
- + Retail pharmacies filled an average of 8,654 prescriptions every month (Now averaging 9,610 prescriptions per month in 2023)**

Changing needs, changing spaces

Over our long history, we've worked hard to meet and exceed the community's current healthcare needs, while preparing for future ones. Given the growing demand for our services and the constraints we're feeling in our current facilities, we believe the time is right to undertake new projects. This will enhance the care we currently provide and put us in a good position to meet tomorrow's needs.

Phase One – From storefront to healthcare excellence

In November 2022, Mile Bluff purchased the former Shopko building in Mauston. Now referred to as the "Gateway Building," it provides more than 26,000 square feet of space that will serve as the new home to Mile Bluff's Mauston dialysis unit, urgent care clinic, and Mile Bluff Pharmacies (formerly Phillips Pharmacy).

	Current space challenges	New space benefits
Dialysis	<ul style="list-style-type: none"> + Basement location with challenging building access + Small, crowded waiting area + Small treatment area + No dedicated patient bathrooms in dialysis department + Layout that makes patient monitoring difficult + No storage + No natural light 	<ul style="list-style-type: none"> + Easy, first-floor access + Dedicated dialysis entrance + Spacious waiting area + Private offices for staff + In-unit exam rooms + Designated bathrooms for dialysis patients + Two centralized nurses' stations for better patient monitoring + A wall of windows that overlooks the Lemonweir River and adds plenty of natural light
Mile Bluff Pharmacy	<ul style="list-style-type: none"> + Drive-thru is located in a cramped alley + Lack of customer privacy for pharmacy consultations + No fitting rooms + Limited room to store/display durable medical equipment + Limited pharmacy workspace 	<ul style="list-style-type: none"> + Easy-access drive-thru, with waiting spots for order processing + Increased space for customer privacy + Two fitting rooms for medical supply fitting (e.g., post-mastectomy) + Equipment storage areas + Showroom for durable medical equipment display + Enhanced security for staff and medications
Urgent Care	<ul style="list-style-type: none"> + Shared space with emergency department causes confusion on wait times, hours of operation, and billing + Limited privacy + Wait in urgent care impacted by busy emergency room 	<ul style="list-style-type: none"> + Urgent care will have its own space with more rooms to care for patients + Dedicated waiting and exam rooms + Enhanced patient privacy and security + Lab and imaging services dedicated to urgent care patients + Increased efficiencies for shorter patient wait times

Project Timeline*

*Tentative and subject to change.

<p>November 2023: Remodeling begins in the Gateway Building.</p>	<p>January 2024: Planning for the Emergency Department Remodel begins.</p> <p>Summer 2024: Remodeling concludes in the Gateway Building and services move to new location.</p>	<p>Early Fall 2024: Once Urgent Care moves into Gateway building, remodeling will begin in the Emergency Department on main hospital campus.</p> <p>Spring 2025: Remodeling in Emergency Department is complete.</p>
---	--	--

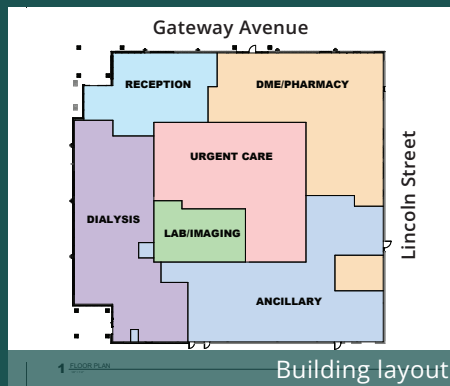
Phase Two – Dedicated space for emergency care

Currently, Mile Bluff’s emergency and urgent care departments share a space at the main hospital campus. As the need for emergency services continues to grow, and patients request more convenience from urgent care, we are eager to give each service area its own space.

Once urgent care services move to the Gateway Building, remodeling will begin in the Emergency Department. Although the design for this department is still in the planning stages, a new floor plan for the Emergency Department will provide more space for patients, a more efficient set-up for staff, and increased security and comfort for all.

	Current space challenges	New space benefits
Emergency Room	<ul style="list-style-type: none"> + Lack of exam rooms means patients are often cared for in the hallway when ER is busy + Small, shared waiting room + Limited patient privacy + Location of nurses’ station makes it difficult to monitor patients + Lack of storage for needed equipment + Difficult entrance/exit for ambulance deliveries 	<ul style="list-style-type: none"> + More treatment rooms + Dedicated emergency department waiting room + Improved patient privacy + Centralized nurses’ station for improved patient monitoring + Enhanced security + Much more

Phase 1 – An inside view

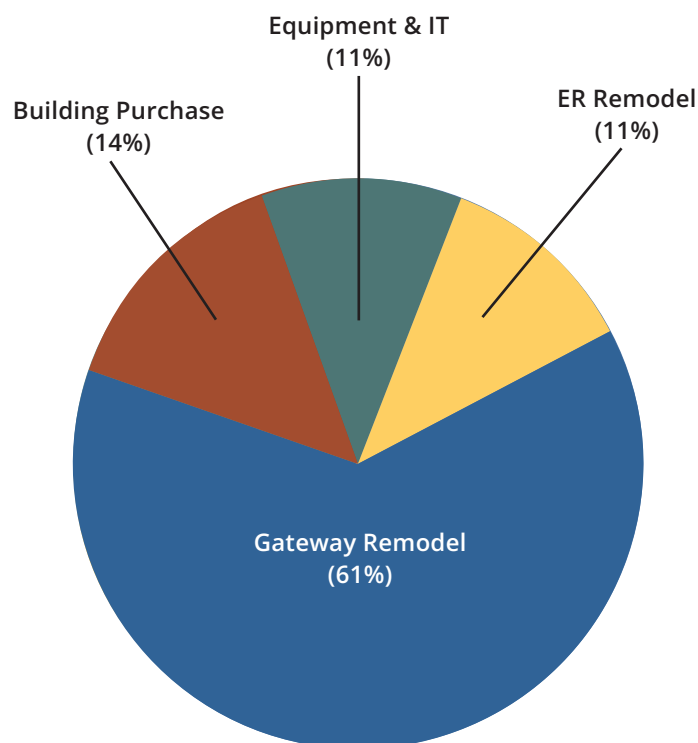


Strengthening local healthcare— For you. With you.

Just as the community has been able to count on Mile Bluff, we are now counting on your help to make these crucial facility updates possible. If you're grateful to have excellent healthcare in your neighborhood, or if you and your loved ones, have had your lives changed because a full range of medical services was available locally, please consider supporting our efforts to strengthen healthcare in Juneau County and the surrounding area.

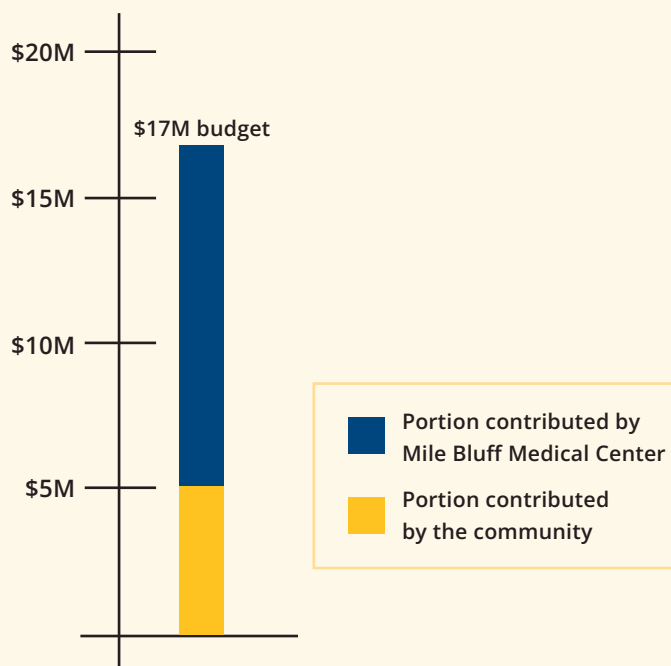
After careful planning and assessment, we are ready to embark on our next chapter.

Including the purchase of the Gateway Building, the estimated cost to remodel Gateway and the Emergency Department is \$17 million.



Mile Bluff Medical Center is committed to completing this project. In addition to purchasing the Gateway Building, the organization has secured bond funds and has made preparations to undertake a project of this magnitude.

However, we are asking the community to help us raise \$5 million to support these healthcare expansion projects.



Please join us as we work to create a bright future for Mile Bluff Medical Center and the greater community.

For more information, please contact Katie Nuttall: knuttall@milebluff.com or 608-847-2735.

Accessible healthcare for every age

Thanks to Mile Bluff Medical Center, Juneau County residents have convenient access to a comprehensive range of acute-, chronic-, and wellness-related healthcare services, some of which include the following:

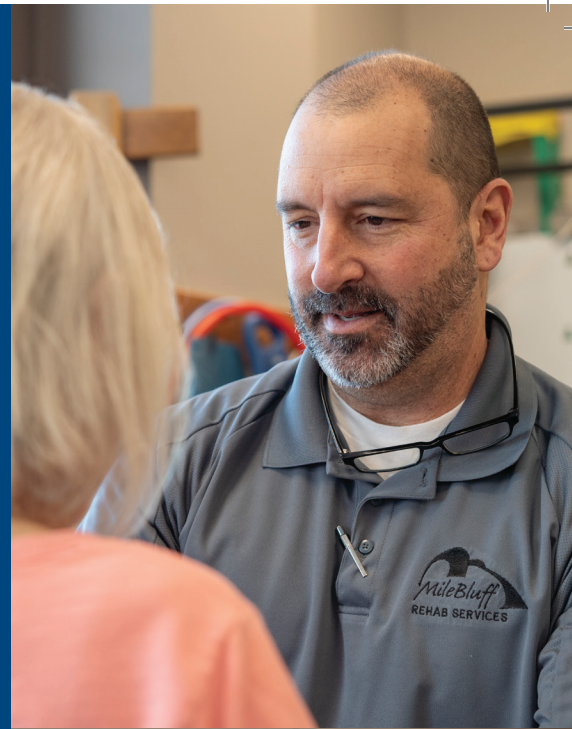
-  Acute care hospital
-  Emergency care
-  Primary, urgent, and same-day care
-  Two dialysis treatment centers
-  Two nursing and rehabilitation centers
-  Senior services
-  Gynecology, obstetrics, and a birth center
-  Pharmacy services
-  Infusion therapy and wound care center
-  Orthopedic surgery
-  Pain management
-  Rehabilitation services

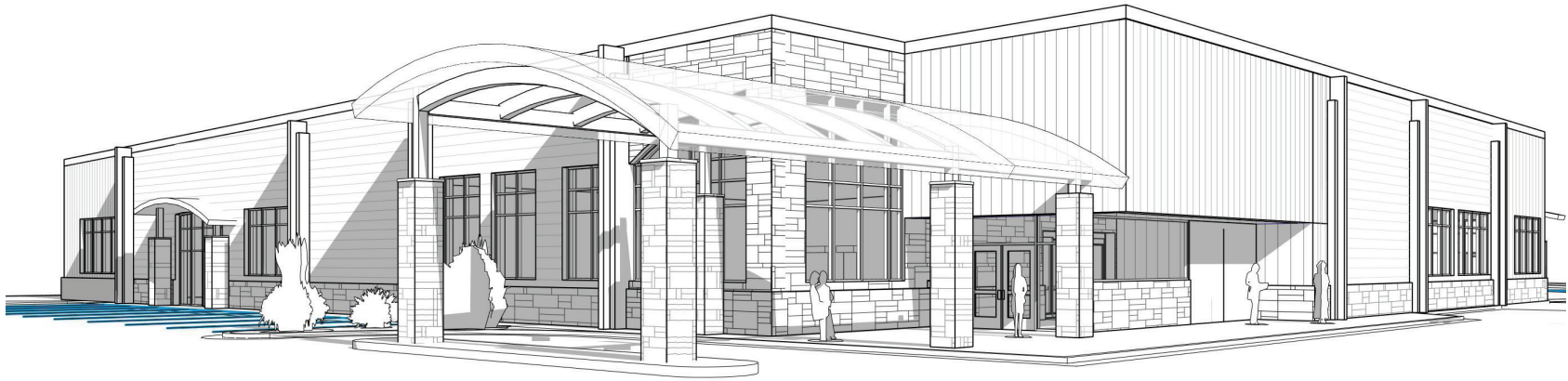
Mile Bluff Medical Center:

- + Employs over 550 full-time and 196 part-time team members
- + Contributes nearly \$138 million annually to economic activity
- + Adds almost \$90 million in total income to the local economy
- + Has given millions of dollars in charity care and community support throughout our organization's history

Since 2010, generous donations from community members, employees, businesses, and grateful patients have supported Mile Bluff Medical Center Foundation in providing:

- + Over \$576,000 in medical equipment
- + Over \$148,000 in healthcare scholarships
- + Over \$100,000 in support of remodeling projects throughout the organization
- + A variety of community health education events





To learn more about how your gift could transform local healthcare today, please contact:

Katie Nuttall, Foundation Director

✉ knuttall@milebluff.com

☎ (608) 847-2735

📍 1050 Division St.
Mauston, WI 53948

🌐 www.milebluff.com/our-foundation

